

# GoJelly-App

How citizen science can help  
predicting jellyfish blooms







# Jellyfish Blooms are increasing!



**They interact** with coastal industry, tourisms etc.



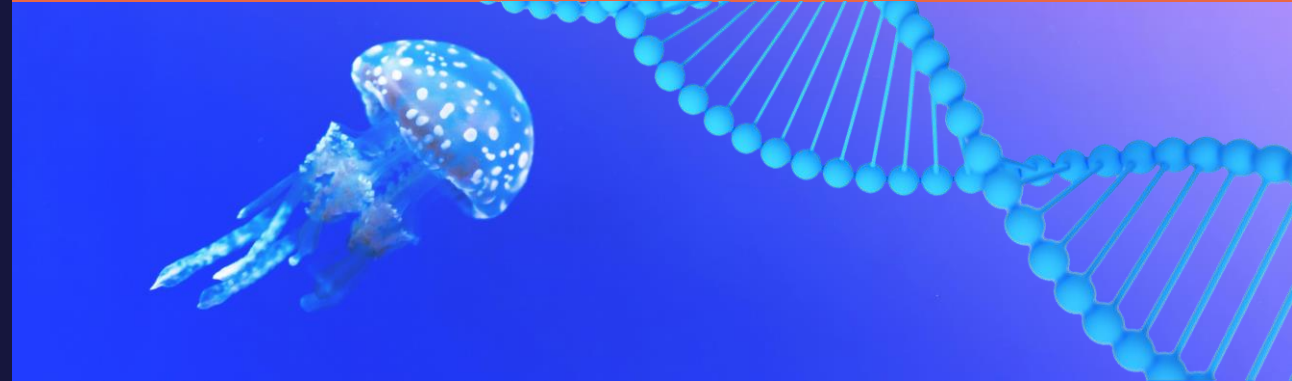
**It is difficult to track the jellyfish** aggregates and blooms because they are fragile and dependent to the ocean currents



# Prediction of Jellyfish Blooms



Scientific cruises were set to sample for juvenile and matured medusae



Genetic population samples were taken to understand where the source of medusae are

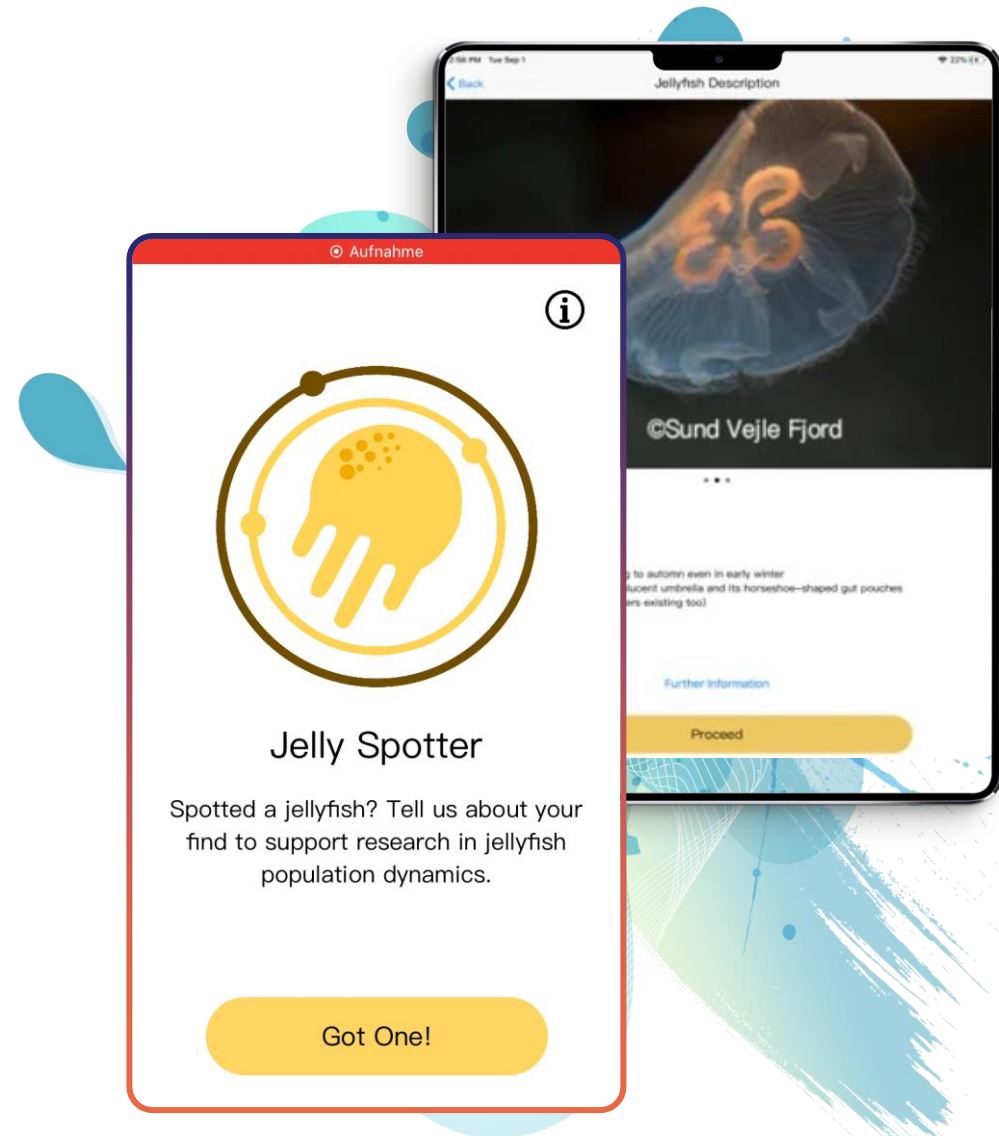


It was proofed if **drones** can be applied to trace Jellyfish Bloom



# Jelly Spotter App

Developed to validate  
all the scientific and  
theoretical models

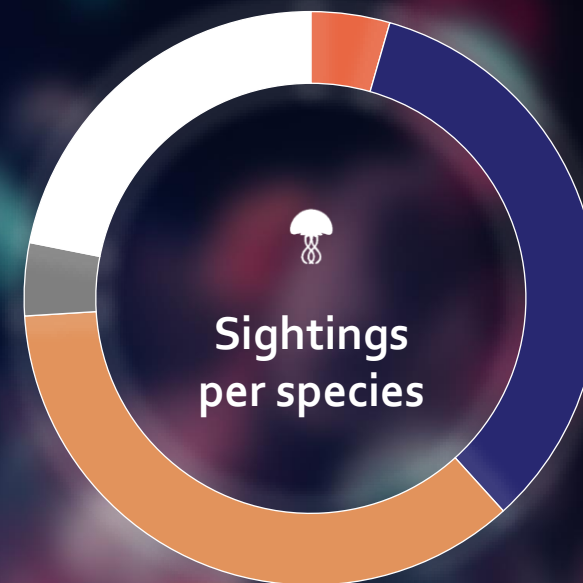




# Jelly Spotter App

We have more than  
**600 sightings!**

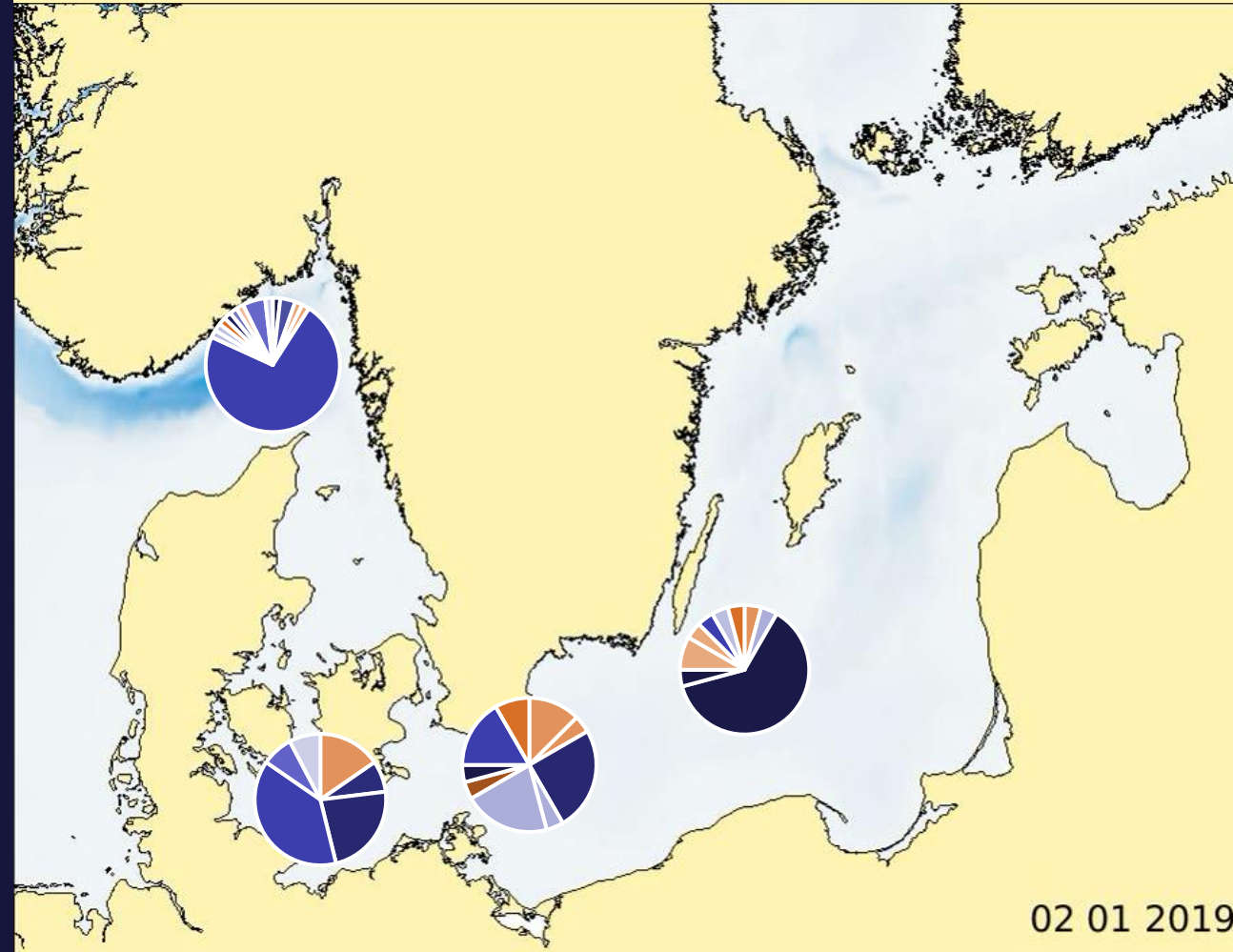
Out of these sightings 385 were submitted with a photo



- Cyanea lamarckii/ Blue jellyfish
- Lion's mane
- Moon jelly
- Sea Walnut/Comb Jelly
- Unknown

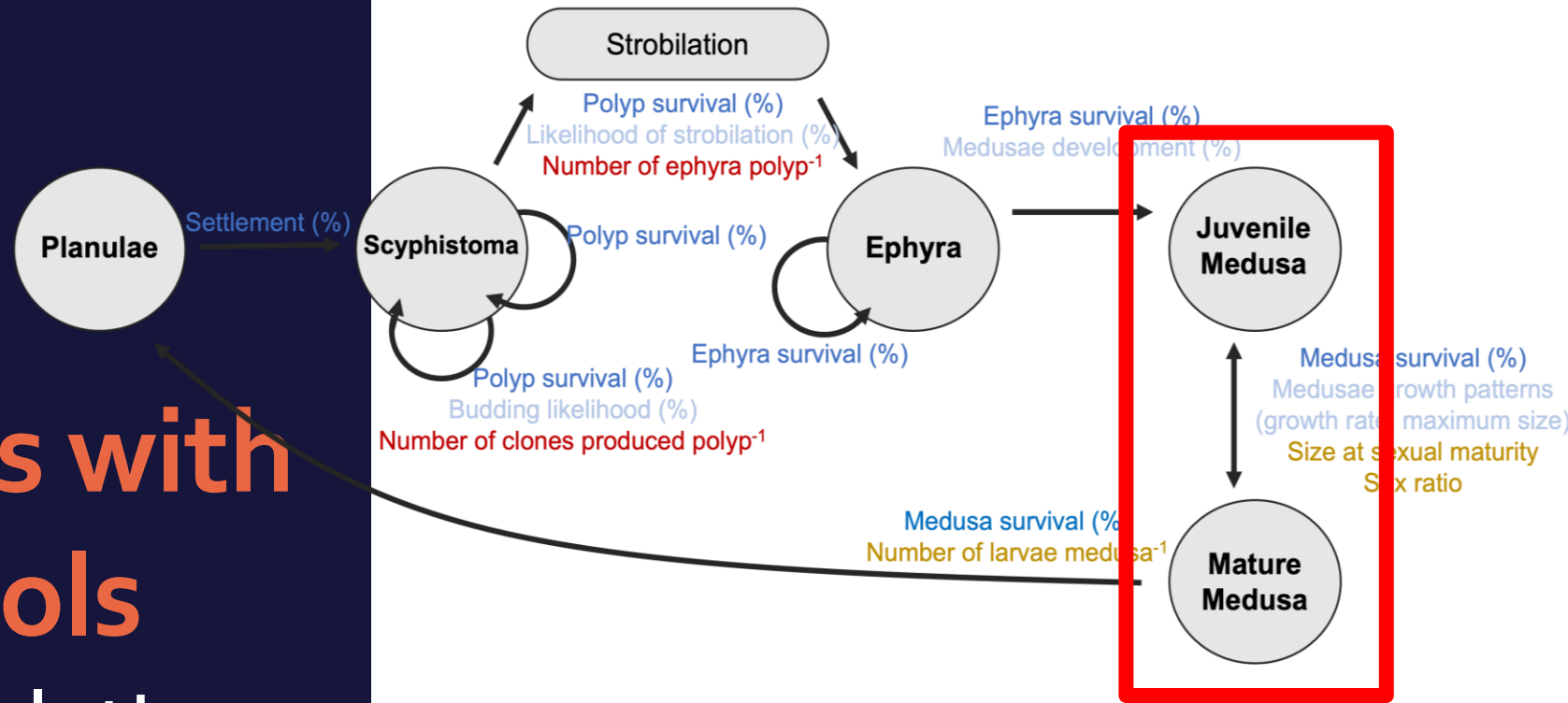
# Linking Citizens with Science

1) mapping genetic populations of jellyfish around the Baltic Sea



# Linking Citizens with Scientific tools

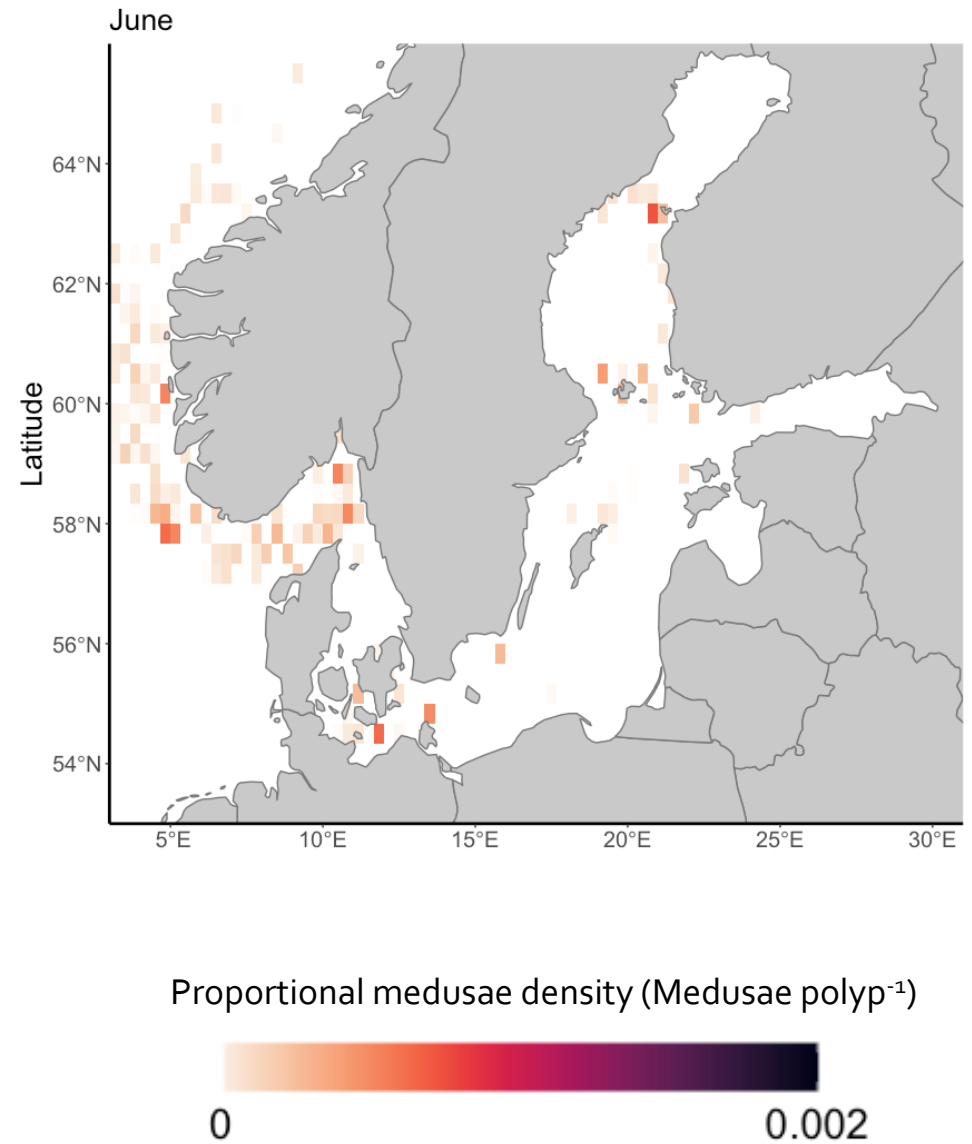
## 2) Building a population demographic model





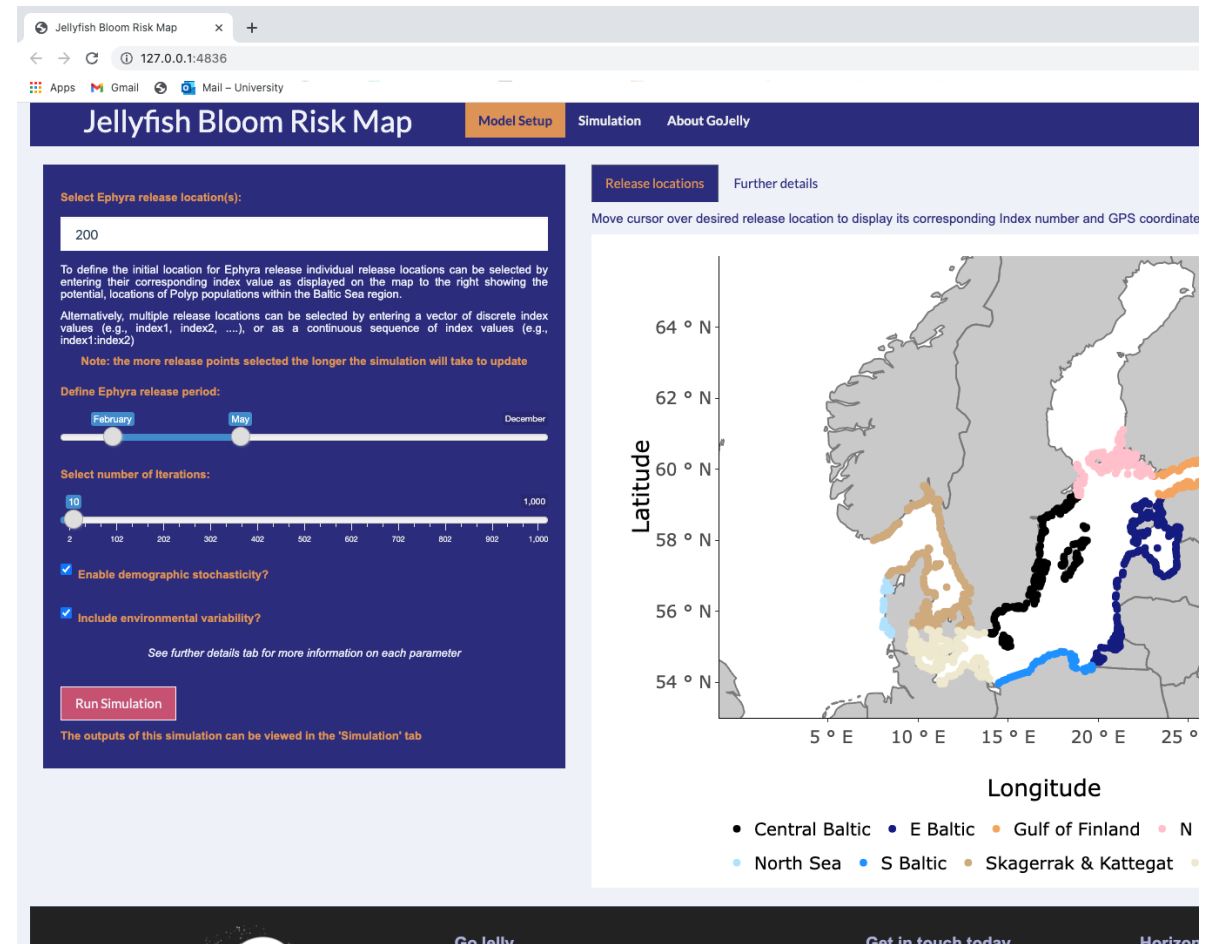
# Interactive Bloom Risk Map

3) Combining demographic  
and hydrodynamic drifting  
components



# Interactive Bloom Risk Map

Will be released next year  
to be used by interested  
stakeholders





This project has received funding  
from the **European Union's  
Horizon 2020 research and  
innovation programme**

Grant agreement No 774499